



1612 Hutton Drive, Suite 140 • Carrollton, Texas 75006  
Phone: (800) 558-6960 • Fax: (972) 389-4752

# KELLEY

## ■ HK HYDRAULIC DOCKLEVELER STANDARDIZED PIT DETAILS

## ■ STAR® CONDUIT RUN DETAILS *(Back Cover)*

CUSTOMER \_\_\_\_\_

ADDRESS \_\_\_\_\_

JOB \_\_\_\_\_

**DOCKLEVELER:** HYDRAULIC    MODEL NUMBER \_\_\_\_\_    QUANTITY \_\_\_\_\_

**DOCKLEVELER RATING PER ANSI MH14.1-1987:**

30K     35K     40K     45K     50K

**LIP LENGTH:**     16"     18"     20"

**HYDRAULIC DOCKLEVELER ELECTRICAL REQUIREMENTS:**

Voltage:     115     208     220     230     380     460     575     Solar

Phase:     1Ø     3Ø

Frequency:     60 Hz     50 Hz

**STAR RESTRAINTS:**     STAR 1     STAR 1 with TRUK ALERT     STAR 4  
 STAR 2

**NOTE:** All STAR restraints, except STAR 1, require 115V, 1Ø, 60 Hz.

### CERTIFIED FOR CONSTRUCTION

BY \_\_\_\_\_    DATE \_\_\_\_\_

COMPANY \_\_\_\_\_

CITY & STATE \_\_\_\_\_

5567 R4 JUNE 2010

**▲ WARNING**

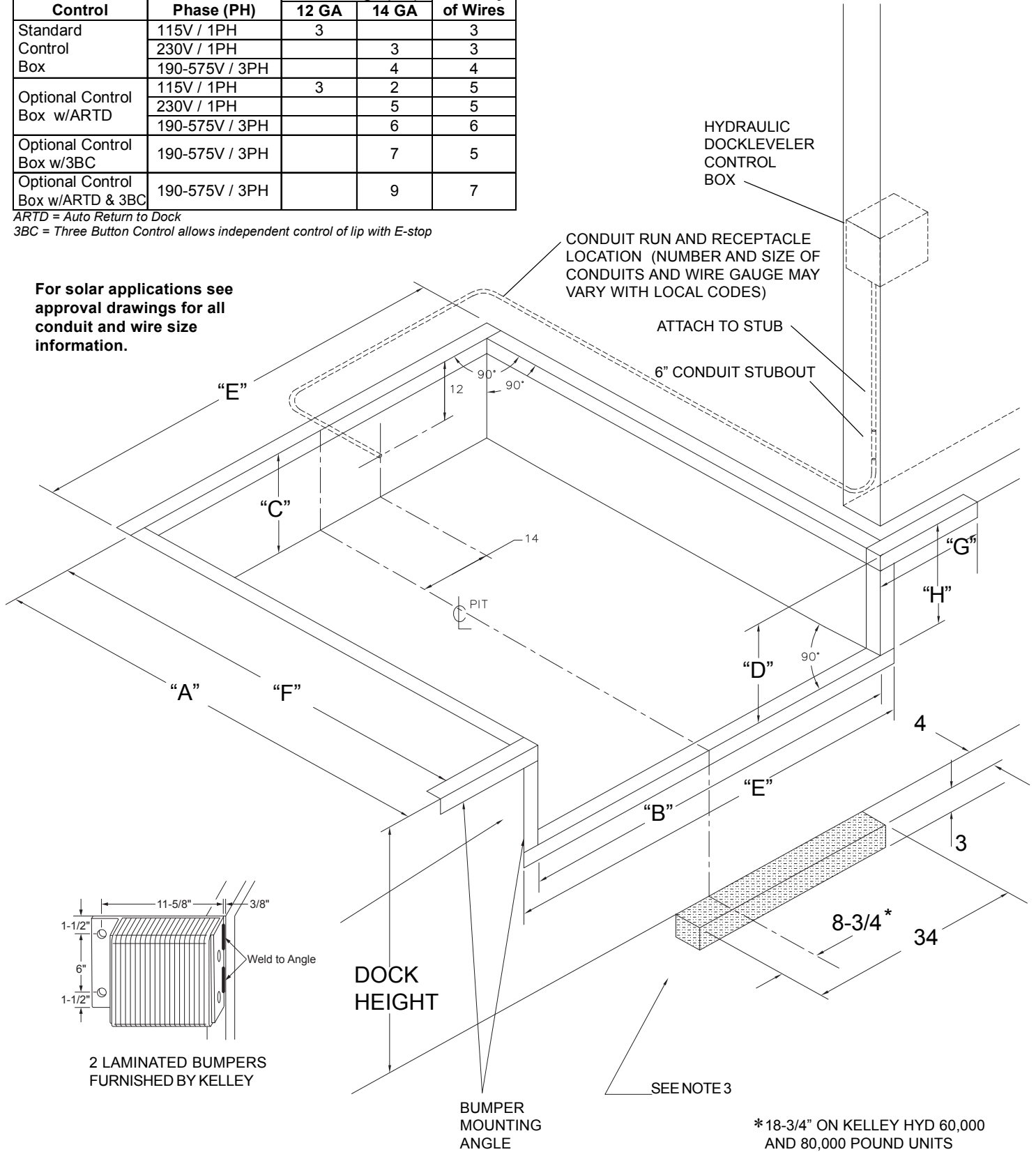
*Death or serious injury could result from failure to follow Kelley specifications for pit dimensions and/or configurations, or conduit location; improper installation of dock leveler, anchoring devices or optional/accessory equipment; installation into improperly formulated, prepared or placed concrete or concrete which is otherwise inadequate or unsound.*

# HK HYDRAULIC DOCKLEVELER STANDARDIZED PIT DETAILS

Hydraulic Dockleveler Control	Voltage (V) and Phase (PH)	Quantity and Wire Gauge (GA)		Total Quantity of Wires
		12 GA	14 GA	
Standard Control Box	115V / 1PH	3		3
	230V / 1PH		3	3
	190-575V / 3PH		4	4
Optional Control Box w/ARTD	115V / 1PH	3	2	5
	230V / 1PH		5	5
	190-575V / 3PH		6	6
Optional Control Box w/3BC	190-575V / 3PH		7	5
Optional Control Box w/ARTD & 3BC	190-575V / 3PH		9	7

ARTD = Auto Return to Dock  
 3BC = Three Button Control allows independent control of lip with E-stop

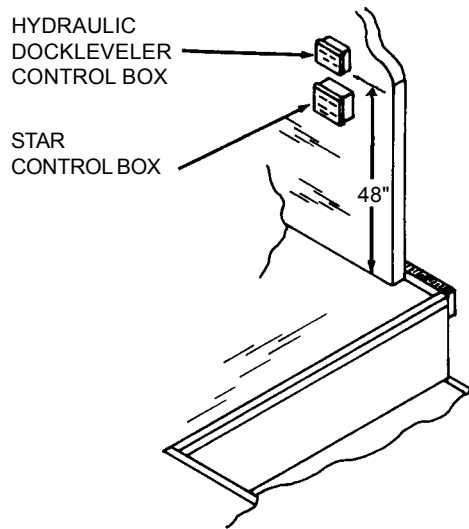
For solar applications see approval drawings for all conduit and wire size information.



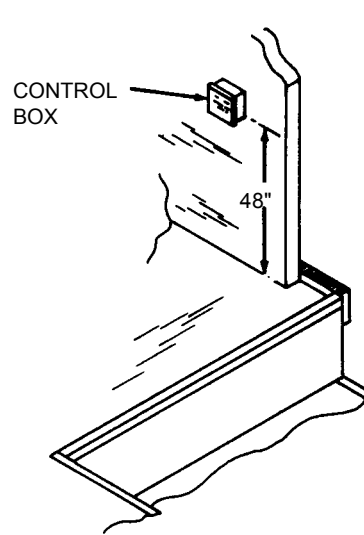
\* 18-3/4" ON KELLEY HYD 60,000 AND 80,000 POUND UNITS

**NOTE 3:** IF A STAR TRUK STOP IS TO BE INSTALLED AND THE DRIVEWAY IS SUSCEPTIBLE TO FROST, PLACE A STYROFOAM BLOCK IN THE CONCRETE IN THIS AREA. THIS WILL PREVENT DAMAGE TO THE STAR TRUK STOP WHEN DRIVEWAY RISES.

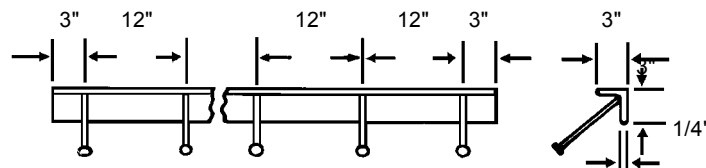
## LOCATION FOR HYDRAULIC DOCKLEVELER AND STAR CONTROLS



## LOCATION FOR SINGLE CONTROL BOX FOR DOCKLEVELER OR STAR



## ANCHOR LAYOUT FOR CURB ANGLE



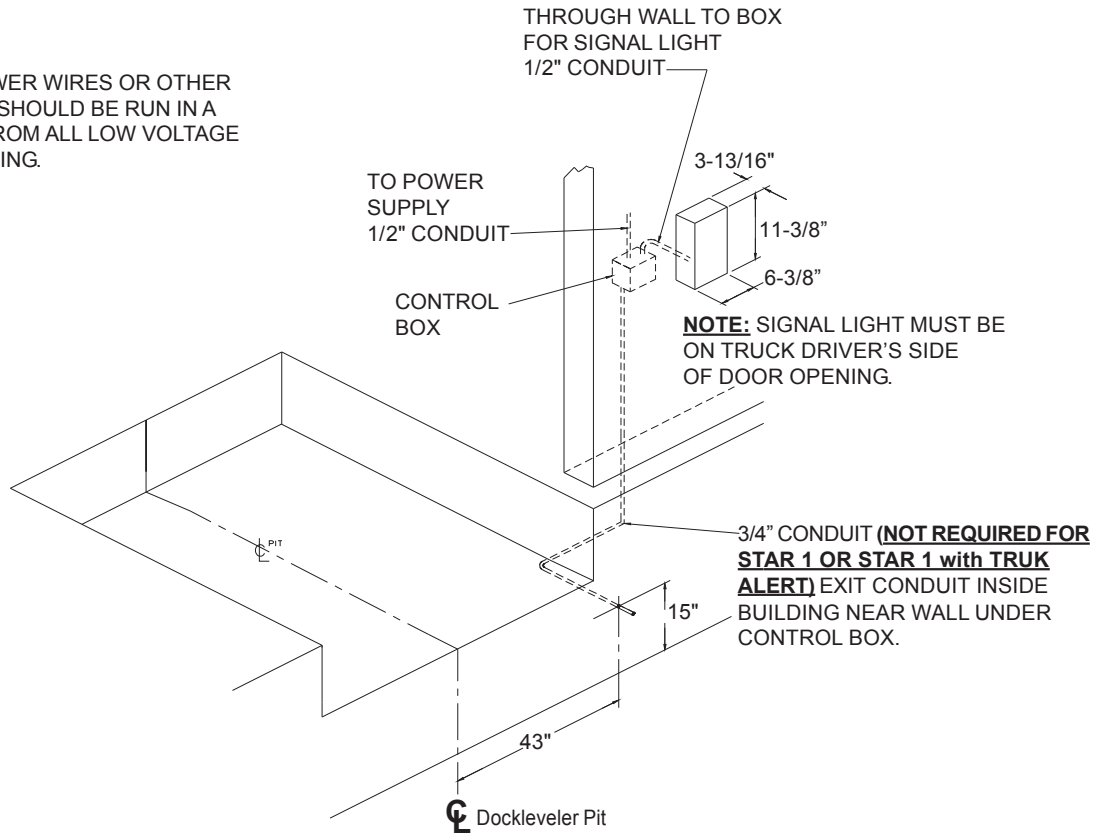
CONCRETE ANCHORS, 1/2" DIA., 6" LONG, LOCATED AS SHOWN

NOMINAL DOCKLEVELER SIZE		6' x 6'	6' x 8'	6' x 10'	6.5' x 6'	6.5' x 8'	6.5' x 10'	7' x 6'	7' x 8'	7' x 10'
PIT LENGTH	DIM. "A"	63"	87"	111"	63"	87"	111"	63"	87"	111"
PIT WIDTH	DIM. "B"	74"	74"	74"	80"	80"	80"	85"	85"	85"
PIT DEPTH Rear	DIM. "C"	19-1/2"	19-1/2"	23-1/2"	19-1/2"	19-1/2"	23-1/2"	19-1/2"	19-1/2"	23-1/2"
PIT DEPTH Front	DIM. "D"	20"	20"	24"	20"	20"	24"	20"	20"	24"
CURB ANGLE Front/Rear	DIM. "E"	80"	80"	80"	86"	86"	86"	91"	91"	91"
CURB ANGLE Side	DIM. "F"	60"	84"	108"	60"	84"	108"	60"	84"	108"
CURB ANGLE Bumper	DIM. "G"	21"	21"	21"	21"	21"	21"	21"	21"	21"
CURB ANGLE Bumper	DIM. "H"	17"	17"	21"	17"	17"	21"	17"	17"	21"

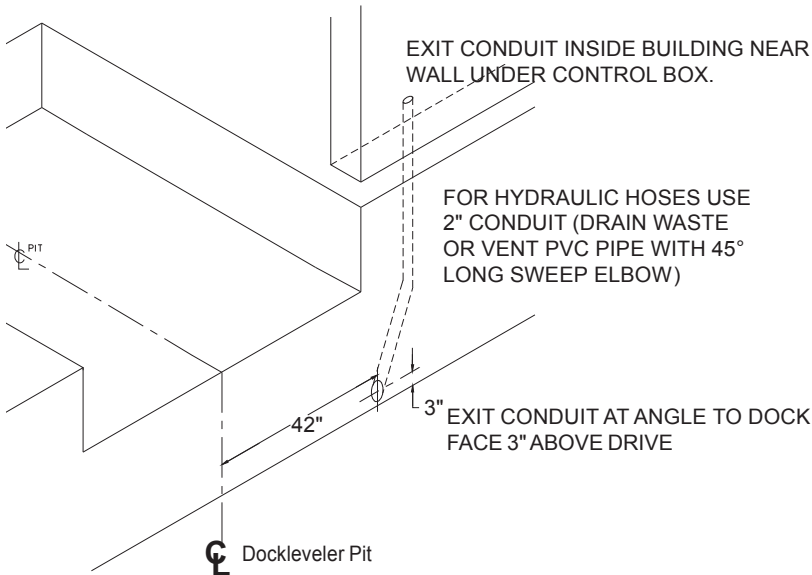
- NOTES: 1) See Kelley product manual for Powered Dockleveler Wiring Diagrams and Typical Installation Drawings.  
 2) See Kelley Drawing No. 10-740 for Cantilever Pit Detail.

# STAR® CONDUIT RUN LOCATION DETAILS

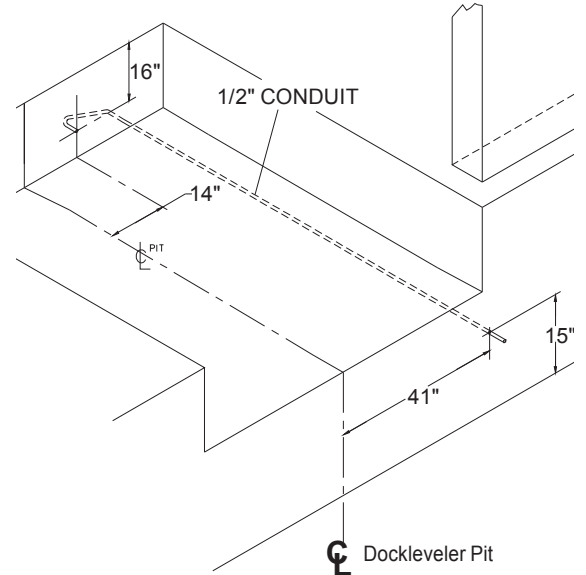
**NOTE:** ALL MOTOR POWER WIRES OR OTHER HIGH VOLTAGE WIRES SHOULD BE RUN IN A SEPARATE CONDUIT FROM ALL LOW VOLTAGE CONTROL CIRCUIT WIRING.



## \*ADDITIONAL CONDUIT REQUIREMENTS FOR OPTIONAL FLOOD PACKAGE — STAR 4



## \*ADDITIONAL CONDUIT REQUIREMENTS FOR OPTIONAL LIP LIMIT SWITCH — STAR 4



\*Requires both the standard conduit run and the additional conduit for the option.



1612 Hutton Drive, Suite 140 • Carrollton, Texas 75006  
Phone: (800) 558-6960 • Fax: (972) 389-4752